

CARDIFF'S HOME FOR
STYLISH SALES
& LETTINGS

JeffreyRoss



NEWPORT ROAD
ROATH





NEWPORT ROAD

ROATH, CF24 1DP - £850 PCM



1 Bedroom(s)



1 Bathroom(s)



sq ft

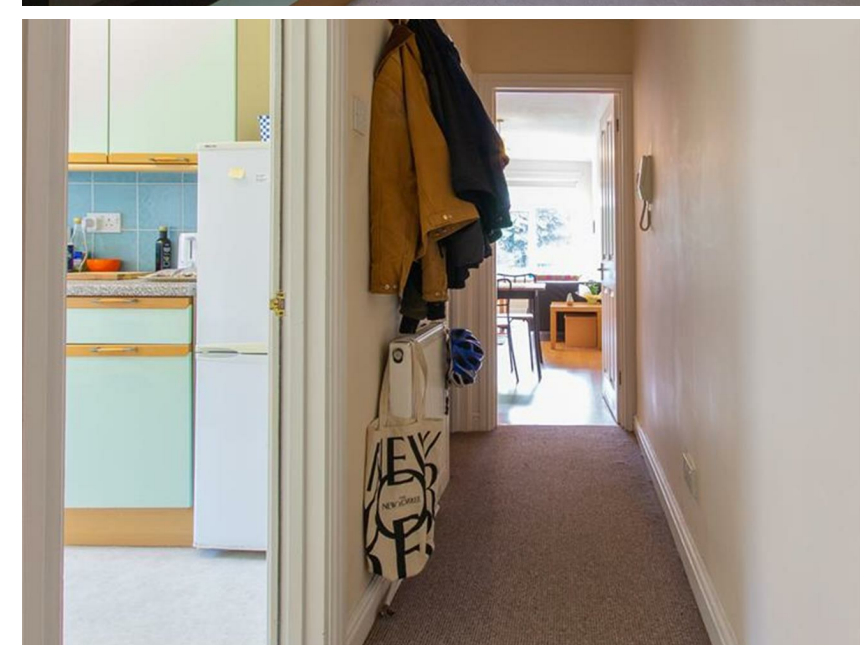
A charming, first-floor, one bedroom apartment in this purpose built block. The apartment is within walking distance to the City Centre and Roath amenities. This property comprises, large living space, separate fitted kitchen, large family bathroom, 1 double bedroom and is furnished. George Court further boasts private parking to the rear.

EPC RATING of B
COUNCIL TAX BAND of B.



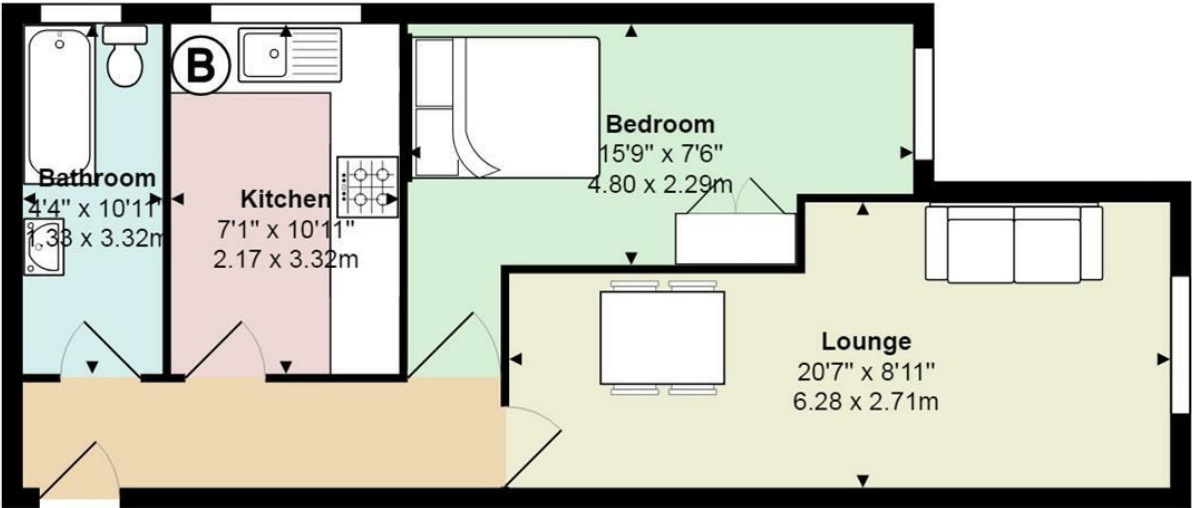
PROPERTY SPECIALIST

Mr Rhys Carter
rhys.carter@jeffreygross.co.uk
Senior valuer





George Court, Roath



Total Area: 472 ft² ... 43.8 m²
All measurements are approximate and for display purposes only

Energy Efficiency Rating		
	Current	Potential
Very energy efficient - lower running costs		
(92 plus) A		
(81-91) B	83	86
(69-80) C		
(55-68) D		
(39-54) E		
(21-38) F		
(1-20) G		
Not energy efficient - higher running costs		
England & Wales	EU Directive 2002/91/EC	